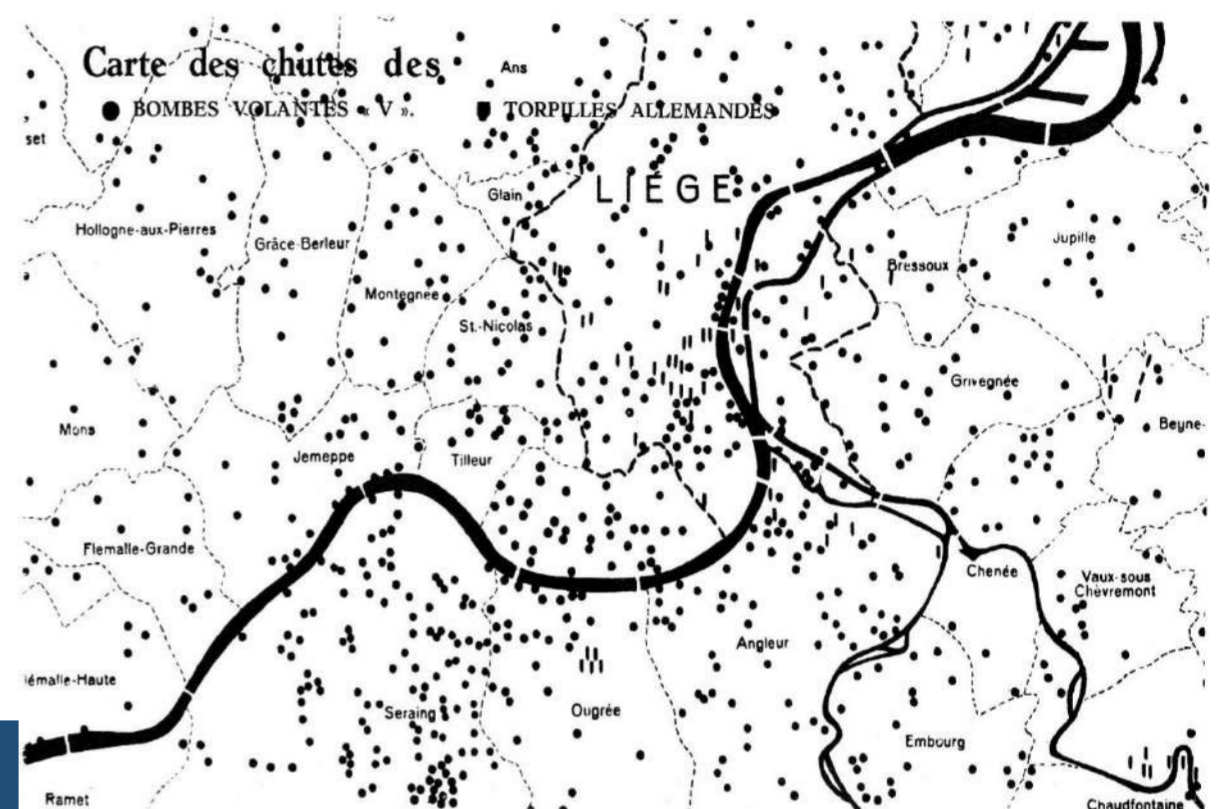


TERRA MOSANA

We draw the past

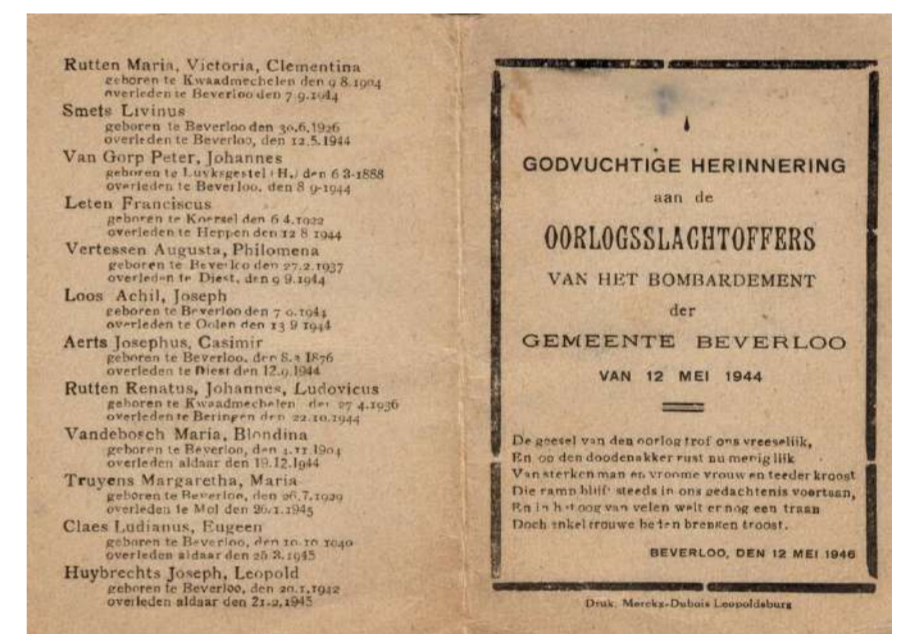
War and Peace

The story of Terra Mosana is not only one of constructive ties of trade and culture. It is also one of organized violence, death, and destruction. World War II was the most total war of all and the air wars its most distinctive feature. Today ashes and rubble made way for urban renewal, while the memory of shared ruin(s) continues to serve as a warning and a call for peace and cooperation.



Deadly Skies, 1940-45. An Investigation

- What was the nature and scale of air defense measures set up in your city during the war, both active and passive?
- What specific measures were taken to protect cultural heritage?
- When and under what circumstances did your city come under air attack?
- When, where and under what circumstances were aircrafts shot down during these attacks? Have the crash sites been mapped, even possibly excavated?
- What was the nature and the scale of the destruction that these air attacks caused in your city?
- What other impacts did these air attacks have on the life in your city? Disruption of utilities, food shortages, breakdown of social order, disease outbreaks, refugee streams, etc.



Renewal and Memory: Lots of Questions

- What were the measures taken at the local, regional, and (trans)national levels to help rebuild or renew the destroyed urban areas? How long did this process take? What was the outcome? In what manner did it change (parts of) your city?
- What do the monuments that commemorate the war deaths and the damaged sites look like?
- Are there any eyewitness testimonies that detail both the air defense measures or the physical destructions? Are there other impacts of the air attacks on your city visible or noticeable?
- The answers to all the above questions will allow the comparing and contrasting of the air war's impacts, the responses to them, the outcomes of reconstruction, and its remembrance. At the same time, the questions will help us understanding the mutual impact on Belgium, the Netherlands and the German border area.

